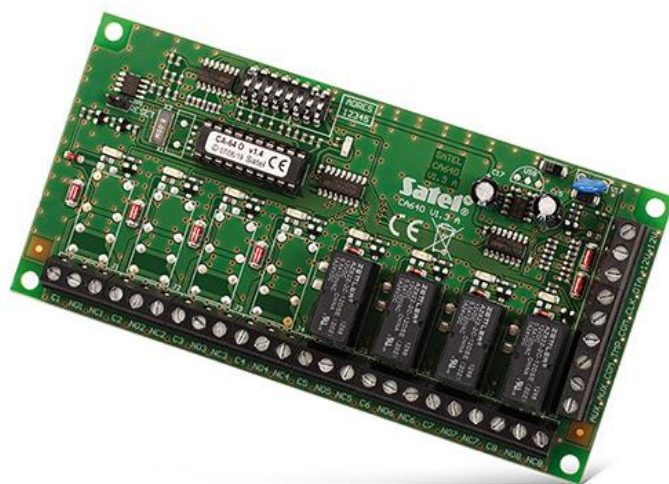


CA-64 O-ROC

OUTPUT EXPANSION MODULE

An extension module for **VERSA** and **INTEGRA** control panel outputs making it possible to extend a system with 8 additional outputs. Depending on the module variant, this may include "open collector" type outputs, relay outputs or a combination of both these types.

- system expansion with 8 outputs
 - 4 relay and 4 low current OC outputs



TECHNICAL DATA

Environmental class	II
Max. relay switched voltage	24 V
Max. relay switched current	2 A
Supply voltage	12 V DC
OC outputs rating	50 mA
Board dimensions	140 x 68 mm
Operating temperature range	-10...+55 °C
Weight	96 g
Current consumption (w/o OC type output load and w/o active relays)	36 mA
Current consumption by active relay	20 mA

